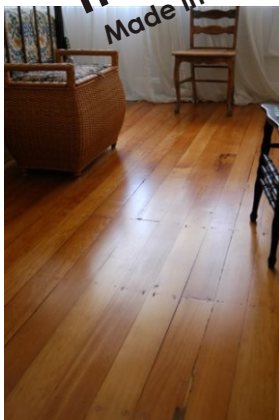


Treatex®

Wood Finishes
from Professionals



Treatex® Hardwax Oil
Traditional
Made in Germany



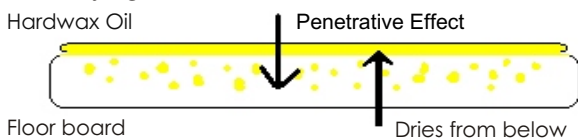
Treatex®



Hardwax Oil Traditional

... Just the thing and not just for floors

- Manufactured and processed with the least possible risk to humans and the environment.
- On a base of natural sustainable raw materials such as linseed oil, sunflower oil, jojoba oil, beeswax, carnauba wax and candelilla wax.
- Contains no pollutants and very few solvents.
- Odourless.
- Quick drying.



- **2 coats in just 3 - 6 hours.**
- **No sanding between coats.**
- Very durable.
- Microporous or closed porous surface possible depending on application quantity.
- Will not peel or flake off.
- Complies with regulation DIN 68861-1B: resistance to substances such as wine, coffee, fizzy drinks, tea, beer etc.
- Complies with DIN EN 71-3: Safe for use on children's toys.
- Complies with DIN 53160: Sweat and saliva proof.
- Easy to clean with Treatex® Floor Care.
- Easy to maintain with Treatex® Wax Polish.
- Suitable for use on stairs, wood, cork, work tops and furniture.
- Recommendable for those with dust allergies; dirt and dust can be removed easily.
- Available in clear, or in a range of colours.



Surface Treatment

Floor Preparation

- Sand the surface with 80-150 grit sandpaper.
- Remove all dust and dirt.
NB: Providing warmth and good ventilation will speed up the drying process, but coldness and humidity will slow down the process.
- Before applying Treatex® Hardwax Oil Traditional to the whole floor, please test on a small area first.
No sanding between coats.



Classic Treatment Method

- Apply the Hardwax Oil thinly and evenly over the surface with a paint scraper or thinly with a brush. The surface will dry in approx. 1 hour.
- Apply the second coat as above.
- Allow to dry overnight - the floor may then be used. The surface will reach maximum hardness after a further 24 hours.



Treatex® Hardwax Oil Gloss

Surface Treatment

Heavy-duty use in commercial settings

- Use a Treatex® Roller to apply Treatex® Hardwax Oil Traditional to the clean surface, allowing roughly 30g per m².
- Maintaining warmth and ventilation will enable the floor to dry within 4 - 8 hours.
- Apply with a roller a second coat of Treatex® Hardwax Oil, again allowing roughly 30g per m².
- Allow to dry thoroughly overnight - the floor may then be used. The surface will reach maximum hardness after a further 24 hours.



Coloured Products

- Treatex® Traditional Colours should be brushed on thinly and if necessary cloth off the excess.
- Finish with one or two coats of Treatex® Hardwax Oil Traditional Clear as required.
- We advise that when using colours, sufficient product is purchased to complete the project and when more than one tin is required it is advisable to mix them together before use.

Treatex® Wax Primer

- 'used for first coat on oily timbers like Ippe, Teak, Jarrah Merbau etc'
- Remove loose dust and dirt with a broom or vacuum cleaner.
- Apply Treatex® Wax Primer thinly and evenly over the surface with a brush, roller or scraper.
- Allow to dry 3 hours - the floor may then be treated with Treatex® Hardwax Oil Traditional.



Cleaning, Maintenance and Repair

Daily cleaning in the home

- A broom or vacuum cleaner is sufficient for light soiling.
- For heavier soiling, damp mop adding **Treatex® Floor Care** to the mop water.
- **Treatex® Floor Care** has a neutral pH value and contains no solvents or dyes. It is manufactured on a base of biodegradable tensides and the natural wax of the carnauba palm.
- Use 3 caps of **Treatex® Floor Care** to 5 litre of water for regular damp mopping and maintenance.
- Increase the quantity for very Heavy soiling.

Cleaning in commercial locations

- For regular cleaning and maintenance simply add 25-50 ml of **Treatex® Floor Care Commercial** to 5 liter of water.
- For heavy soiling we recommend using 25-50 ml of **Treatex® Refreshment Cleaner** added to 5 litres of water. When the floor is dry again (approx. 3 hours), apply a thin coat of **Treatex® Wax Polish** with a cotton cloth. Allow to dry overnight, after which the floor may be used again.

Repair

- Sand down damaged areas with 150 grit sandpaper following the grain of the wood.
- Then sand down with sandpaper of up to 280 grit.
- Continue by following the instructions given in the 'surface treatment' section.



Cleaning and Maintenance
Products

FAQ

What can I do if the surface becomes dull?

This dullness is often caused by using incorrect cleaning methods or materials. Use Treatex® Floor Care for day-to-day cleaning and maintenance. This will bring back the usual sheen to the surface.

What if the material does not dry within the specified time (8 hours)?

The most common reason for slow drying is over-application. If this is the case, the drying time is increased by up to a further 8 hours. Please ensure that adequate ventilation is provided.

What can I do if the floor doesn't seem to have enough "body"?

Since it is the material that gives the floor "body", it is likely that you have applied too little. Apply an additional thin coat of Treatex® Hardwax Oil Traditional.

Are there any advantages to applying larger quantities of the material?

The more you apply, the more hardwearing the surface becomes. However, applying larger quantities than recommended in the 'commercial use' section will have no added benefit and will not increase durability or "body". NB: applying larger quantities increases the drying time considerably.

Treatex Ltd

54 Sandford Lane Industrial Estate
Kennington, Oxford, OX1 5RP
Phone 01865 735353, Fax 01865 736673
www.treatex.co.uk - info@treatex.co.uk